



**ITExamWorld.com**

**The Top Certification Site** **OVER 1000 EXAMS FROM ALL VENDORS**

- Verified Answers and Explanations
- Printable questions and answers
- Update per 15-20 Days
- Instant Download
- Security Multi Order
- 24\*7 Support
- Pass on Your First Try Guarantee

 **Interactive Exams**  
Self Exam Engine

 **Questions & Answers**  
With Explanations

 **Study Guides**

 **Preparation Labs**

 **Audio Exams**

**Exam Code: 642-066**

**Advanced Routing and Switching for Field Engineers**

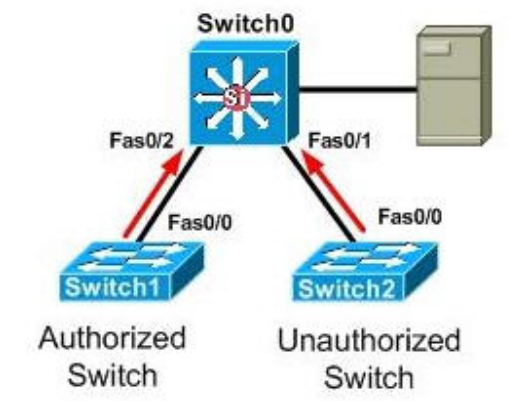
**Demo Version**

To Access Full Version, Please go to

[www.itexamworld.com](http://www.itexamworld.com)

[www.itexamworld.net](http://www.itexamworld.net)

**Question: 1**  
Exhibit



Which Catalyst switch configuration would protect a customer network from possible disruption in the case in which an unauthorized switch is added to the network?

- A. Switch0#show running-configuration  
!  
hostname Switch0  
!  
no spanning-tree optimize bpdu transmission  
spanning-tree extend system-id  
!  
interface FastEthernet0/1  
switchport protected  
!
- B. Switch0#show running-configuration  
!  
hostname Switch0  
!  
spanning-tree portfast bpduguard default  
no spanning-tree optimize bpdu transmission  
spanning-tree extend system-id  
!  
interface FastEthernet0/1  
spanning-tree guard root  
!
- C. Switch0#show running-configuration  
!  
hostname Switch0  
!  
no spanning-tree optimize bpdu transmission  
spanning-tree extend system-id  
!  
interface FastEthernet0/1  
switchport mode access  
!
- D. Switch0#show running-configuration  
!  
hostname Switch0
-

```
!  
no spanning-tree optimize bpdu transmission  
spanning-tree extend system-id  
!  
interface FastEthernet0/1  
switchport port-security violation restrict  
!
```

**Answer: B**

**Question: 2**

While troubleshooting a network outage, you discover that an employee brought a switch from home into the office to connect additional equipment to the network. In order to increase his speed, he connected this switch to both network ports in his office, resulting in a bridge loop. Which of these can you implement to prevent future occurrences of this issue?

- A. RSTP
- B. root guard
- C. BPDU guard
- D. GLBP

**Answer: C**

**Question: 3**

Exhibit

```
policy-map high-priority  
  class high  
    set ip dscp 46  
    set mpls experimental 4  
policy-map low-priority  
  class high  
    set ip dscp 46  
    set mpls experimental 3  
policy-map mid-priority  
  class high  
    set ip dscp 46  
    set mpls experimental 2  
  
interface Loopback0  
  ip address 10.100.2.1 255.255.255.0  
!  
interface FastEthernet0/0  
  ip address 10.10.1.2 255.255.255.0  
  service-policy output low-priority  
  service-policy input mid-priority
```

For the given configuration, on packets leaving the router on interface FastEthernet0/0 that matches the high traffic class, what will the MPLS experimental bit be set to?

- A. 0
  - B. 1
  - C. 2
  - D. 3
-

- E. 4
- F. 5

**Answer: D**

**Question: 4**

Which tool allows a LAN client to determine which router should be the first hop to a particular remote destination, allowing simplified client configuration and processing without creating a single point of failure?

- A. Proxy ARP
- B. Dynamic Routing Protocol
- C. IRDP
- D. VRRP

**Answer: D**

**Question: 5**

When implementing MPLS VPNs between CE and PE routers, which of these statements is correct?

- A. If using IS-IS as the PE-CE routing protocol, no redistribution is required.
- B. If using static routes between the CE and PE routers, no redistribution of other VPN routes is required.
- C. If the PE-CE protocol is not BGP, redistribution of other VPN routes from MP-BGP is required.
- D. If RIP is the routing protocol that is used between the PE-CE routers, no redistribution is required, but any other protocol will require redistribution.
- E. If using OSPF or EIGRP as the PE-CE routing protocol, redistribution is not required, but any other protocol or static route will require redistribution.

**Answer: C**

**Question: 6**

You would like to log messages up to the severity level "Notification." Which three of these commands will you need to issue in order to enable syslog messages to be sent to the syslog server at the IP address 10.1.5.5? (Choose three.)

- A. logging on
- B. logging host 10.1.5.5
- C. logging trap notifications
- D. logging syslog notifications
- E. logging monitor notifications
- F. logging console notifications

**Answer: A, B, C**

**Question: 7**

Exhibit

---

```
SB: V111 Grp 11 Tracked interface Port-channel10 Down
SB: V111 Grp 11 Priority 201/251 -> 151/251
SB11: V111 Coup in 172.16.11.111 Standby pri 200 ip 172.16.11.115
SB11: V111 Active: j/Coup rcvd from higher pri router (200/172.16.11.111)
SB11: V111 Active router is 172.16.11.111, was local
SB11: V111 Standby router is unknown, was 172.16.11.111
SB11: V111 Active -> Speak
%STANDBY-6-STATECHANGE: Vlan11 Group 11 state Active -> Speak
SB11: V111 Redundancy "hsrp-V111-11" state Active -> Speak
SB11: V111 Speak: d/Standby timer expired (unknown)
SB11: V111 Standby router is local
SB11: V111 Speak -> Standby
SB11: V111 Redundancy "hsrp-V111-11" state Speak -> Standby
```

What is the HSRP state and priority of this interface after HSRP reaches its steady state?

- A. Active, Priority 151
- B. Active, Priority 201
- C. Active, Priority 251
- D. Standby, Priority 151
- E. Standby, Priority 201
- F. Standby, Priority 251

**Answer: D**