



ITExamWorld.com

The Top Certification Site **OVER 1000 EXAMS FROM ALL VENDORS**

- Verified Answers and Explanations
- Printable questions and answers
- Update per 15-20 Days
- Instant Download
- Security Multi Order
- 24*7 Support
- Pass on Your First Try Guarantee

 **Interactive Exams**
Self Exam Engine

 **Questions & Answers**
With Explanations

 **Study Guides**

 **Preparation Labs**

 **Audio Exams**

Exam Code: 642-144

IP Telephony Express (IPTX)

Demo Version

To Access Full Version, Please go to

www.itexamworld.com

www.itexamworld.net

Question: 1

Drag the characteristic on the left to the compression algorithm it best describes on the right.

G.728	CS-CELP
G.729	
operates at 8 kbps	
operates at 16 kbps	LD-CELP
uses a smaller codebook	
adds a look-ahead of 5 ms	
keeps look-ahead to 2 to 5 ms	

Answer:

G.728	CS-CELP
G.729	
operates at 8 kbps	
operates at 16 kbps	LD-CELP
uses a smaller codebook	
adds a look-ahead of 5 ms	
keeps look-ahead to 2 to 5 ms	

Question: 2

Which two Tcl scripts make up the B-ACD? (Choose two.)

- A - Call Queue
- B - Auto Attendant
- C - Basic Queuing
- D - Direct Inward Dial
- E - Automated Queuing
- F - Automated Call Distributor

Answer: A, B

Question: 3

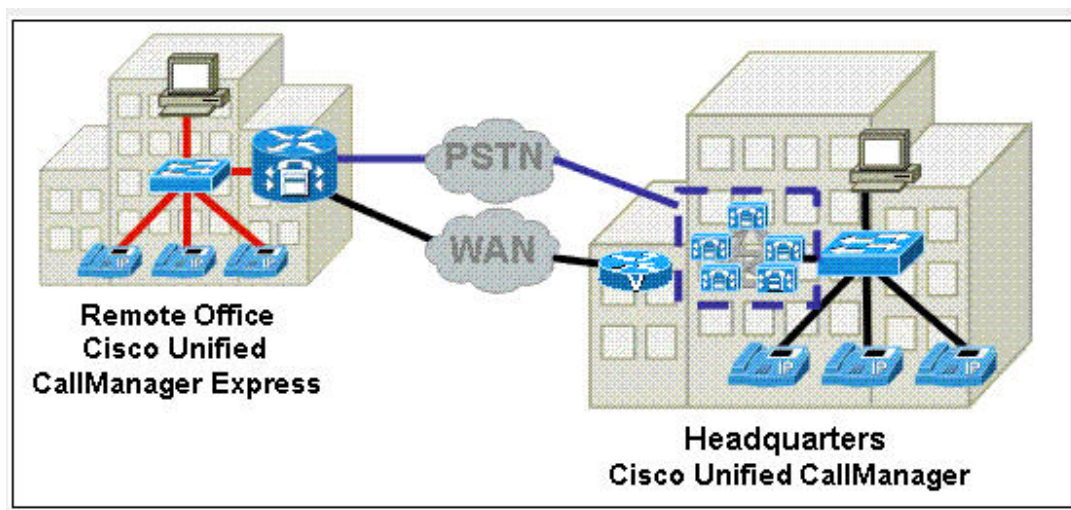
The Clinton Howe Weights and Measures Company wants to send CDRs to a syslog server. Which two options are required? (Choose two.)

- A - The CDR collection must be enabled from the CLI.
- B - The syslog server IP address must be configured using the logging command.
- C - The CDRs must be sent to the syslog server using the gw-accounting syslog command.
- D - The logging file must be initialized using the logging buffered command.

Answer: B, C

Question: 4

Refer to the exhibit.



Where would a Cisco Unity Express Network Module physically reside?

- A - PC at headquarters
- B - PC at the remote office
- C - voice-enabled router at headquarters
- D - Cisco Unified CallManager publisher at headquarters
- E - Cisco Unified CallManager subscriber at headquarters
- F - Cisco Unified CallManager Express router at the remote office

Answer: F

Question: 5

The Hmilton Hari Emporium was having difficulty hearing during conference calls. This configuration adjustment was made, and now the company is experiencing sound distortion.

HHERouter(config-telephone)#max-conference 12 gain 6

What is the cause?

- A - The gain functionality applies to outbound audio packets. Distortion is created when an external participant causes echo.
- B - the distortion is unrelated to the gain functionality. Rather, it is a result of the company trying to maintain too many conference calls at one time.

- C - This functionality cannot discriminate between a local VoIP source that requires volume gain and a CO-powered PSTN source that does not require volume gain.
- D - This functionality cannot discriminate between a remote VoIP or Foreign Exchange Office source that requires volume gain, and a remote VoIP or IP phone that does not require volume gain

Answer: D

Question: 6

The network administrator at Silver Ball GeneralCom has downloaded the cme-gui->xxx.xx.tar file ("xxx.xx" represents the version number of the file) for Cisco Unified CallManager Express. Which file will be extracted?

- A - xml.template
- B - normal_user.js
- C - music-on-hold.au
- D - ATA030100SCCP040211A.zip

Answer: B

Question: 7

Which two of the following must be configured to allow users to blind transfer calls to both internal and PSTN numbers using H.450.2 supplementary services? (Choose two.)

- A - transfer-pattern .T
- B - transfer-system full-blind
- C - supplemental service h.450.2
- D - allow-connections h323 to h323

Answer: A, B