



The Top Certification Site **OVER 1000 EXAMS FROM ALL VENDORS**

- Verified Answers and Explanations
- Printable questions and answers
- Update per 15-20 Days
- Instant Download
- Security Multi Order
- 24*7 Support
- Pass on Your First Try Guarantee

ITExamWorld.com

 **interactive Exams**
Self Exam Engine

 **Questions & Answers**
With Explanations

 **Study Guides**

 **Preparation Labs**

 **Audio Exams**

Exam : 642-812
**BCMSN-Building Converged Cisco Multilayer
Switched Networks**

Demo Version

To Access Full Version, Please go to

www.itexamworld.com

Question: 1

What must be the same to make multiple switches part of the same Multiple Spanning Tree (MST)?

- A - VLAN instance mapping and revision number
- B - VLAN instance mapping and member list
- C - VLAN instance mapping, revision number, and member list
- D - VLAN instance mapping, revision number, member list, and timers

Answer: A

Question: 2

Exhibit:

```
P1S1#show vtp status
VTP Version                : 2
Configuration Revision      : 0
Maximum VLANs supported locally : 1005
Number of existing VLANs    : 11
VTP Operating Mode          : Transparent
VTP Domain Name             : pod1
VTP Pruning Mode            : Enabled
VTP V2 Mode                 : Enabled
VTP Traps Generation        : Disabled
MD5 digest                  : 0x97 0xD6 0xD5 0x0E 0xFA 0x42 0x74
0xEC
Configuration last modified by 0.0.0.0 at 3-1-93 00:57:21
P1S1#show vtp password
VTP Password: 1
```

```
P2S1#show vtp status
VTP Version                : 2
Configuration Revision      : 1
Maximum VLANs supported locally : 1005
Number of existing VLANs    : 13
VTP Operating Mode          : Server
VTP Domain Name             : pod2
VTP Pruning Mode            : Enabled
VTP V2 Mode                 : Enabled
VTP Traps Generation        : Disabled
MD5 digest                  : 0x61 0x57 0xFC 0x33 0xF1 0x77 0x55
0x57
Configuration last modified by 0.0.0.0 at 3-2-93 03:00:01
Local updater ID is 0.0.0.0 (no valid interface found)
P2S1#show vtp password
VTP Password: 2
```

Refer to the exhibit. Switch P1S1 is not applying VLAN updates from switch P2S1. What are three reasons why this is not occurring? (Choose three.)

- A - Switch P2S1 is in server mode.
- B - Switch P1S1 is in transparent mode.
- C - The MD5 digests do not match.

- D - The passwords do not match.
- E - The VTP domains are different.
- F - VTP trap generation is disabled on both switches.

Answer: B, D, E

Question: 3

Which two statements are true about HSRP, VRRP, and GLBP? (Choose two.)

- A - GLBP allows for router load balancing of traffic from a network segment without the different host IP configurations required to achieve the same results with HSRP.
- B - GLBP allows for router load balancing of traffic from a network segment by utilizing the creation of multiple standby groups.
- C - GLBP and VRRP allow for MD5 authentication, whereas HSRP does not.
- D - Unlike HSRP and VRRP, GLBP allows automatic selection and simultaneous use of multiple available gateways.
- E - HSRP allows for multiple upstream active links being simultaneously used, whereas GLBP does not.

Answer: A, D

Question: 4

Exhibit:



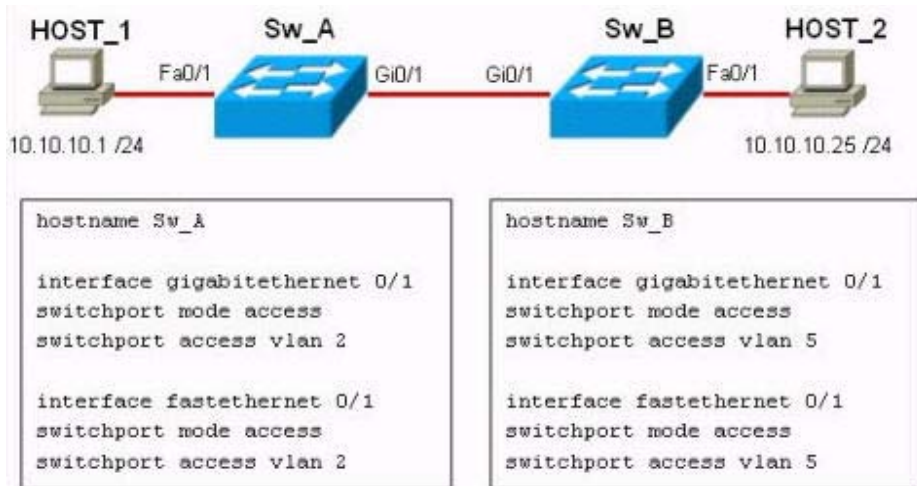
Refer to the exhibit. Which statement is true when voice traffic is forwarded on the same VLAN used by the data traffic?

- A - Quality of service cannot be applied for the voice traffic.
- B - The voice traffic cannot be forwarded to the distribution layer.
- C - Port security cannot be enabled on the switch that is attached to the IP phone.
- D - The voice traffic cannot use 802.1p priority tagging.

Answer: D

Question: 5

Exhibit:



Refer to the exhibit. Both host stations are part of the same subnet but are in different VLANs. On the basis of the information presented in the exhibit, which statement is true about an attempt to ping from host to host?

- A - A trunk port will need to be configured on the link between Sw_A and Sw_B for the ping command to be successful.
- B - The two different hosts will need to be in the same VLAN in order for the ping command to be successful.
- C - A Layer 3 device is needed for the ping command to be successful.
- D - The ping command will be successful without any further configuration changes.

Answer: D

Question: 6

Exhibit:

```

RouterA# show standby
Ethernet0/1 - Group 1
  State is Active
    2 state changes, last state change 00:30:59
  virtual IP address is 10.1.0.20
  secondary virtual IP address 10.1.0.21
  Active virtual MAC address is 0004.4d82.7981
  Local virtual MAC address is 0004.4d82.7981 (bia)
  Hello time 4 sec, hold time 12 sec
  Next hello sent in 1.412 secs
  Preemption enabled, min delay 50 sec, sync delay 40 sec
  Active router is local
  Standby router is 10.1.0.6, priority 75 (expires in 9.184 sec)
  Priority 95 (configured 120)
  Tracking 2 objects, 0 up
    Down Interface Ethernet0/2, pri 15
    Down Interface Ethernet0/3
  IP redundancy name is "HSRP1", advertisement interval is 34 sec

```

Examine the router output above. Which two items are correct? (Choose two.)

- A - Router A will assume the active state if its priority is the highest.
- B - If Ethernet 0/2 goes down, the standby router will take over.
- C - When Ethernet 0/3 of Router A comes back up, the priority will become 105.
- D - The local IP address of Router A is 10.1.0.6.

E - The local IP address of Router A is 10.1.0.20.

Answer: A, C

Question: 7

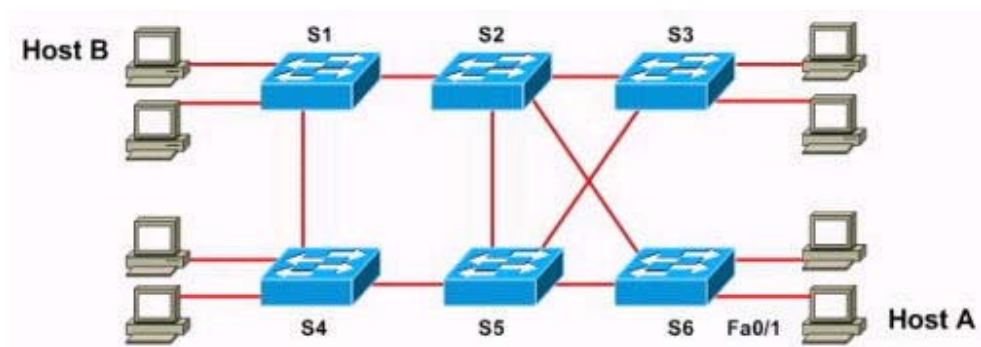
What must be configured on a Cisco switch in order to advertise VLAN information?

- A - VTP password
- B - VTP domain name
- C - VTP revision number
- D - VTP mode
- E - VTP pruning

Answer: B

Question: 8

Exhibit:



Refer to the exhibit. The command `spanning-tree bpduguard enable` is configured on interface Fa0/1 on switch S6. The link between switch S5 and S6 fails. Will Host A be able to reach Host B?

- A - Fifty percent of the traffic will successfully reach Host B, and fifty percent will dead-end at switch S3 because of a partial spanning-tree loop.
- B - No. Traffic will pass from switch S6 to S2 and dead-end at S2.
- C - No. Traffic will loop back and forth between switch S6 and Host A.
- D - No. Traffic will loop back and forth between switches S2 and S3.
- E - Yes. Traffic will pass from switch S6 to S2 to S1.

Answer: E

Question: 9

Exhibit:

```
Vlan8 - Group 8
Local state is Active, priority 110, may preempt
Hellotime 3 holdtime 10
Next hello sent in 00:00:01.168
Hot standby IP address is 10.1.2.2 configured
Active router is local
Standby router is unknown expired
Standby virtual mac address is 0000.0c07.ac08
5 state changes, last state change 00:05:03
```

Refer to the exhibit. Which two problems are the most likely cause of the exhibited output?
(Choose two.)

- A - spanning tree issues
- B - HSRP misconfiguration
- C - VRRP misconfiguration
- D - physical layer issues
- E - transport layer issues

Answer: B, D

Question: 10

Which two statements concerning STP state changes are true? (Choose two.)

- A - Upon bootup, a port transitions from blocking to forwarding because it assumes itself as root.
- B - Upon bootup, a port transitions from blocking to listening because it assumes itself as root.
- C - Upon bootup, a port transitions from listening to forwarding because it assumes itself as root.
- D - If a forwarding port receives no BPDUs by the max_age time limit, it will transition to listening.
- E - If a forwarding port receives an inferior BPDU, it will transition to listening.
- F - If a blocked port receives no BPDUs by the max_age time limit, it will transition to listening.

Answer: B, F